

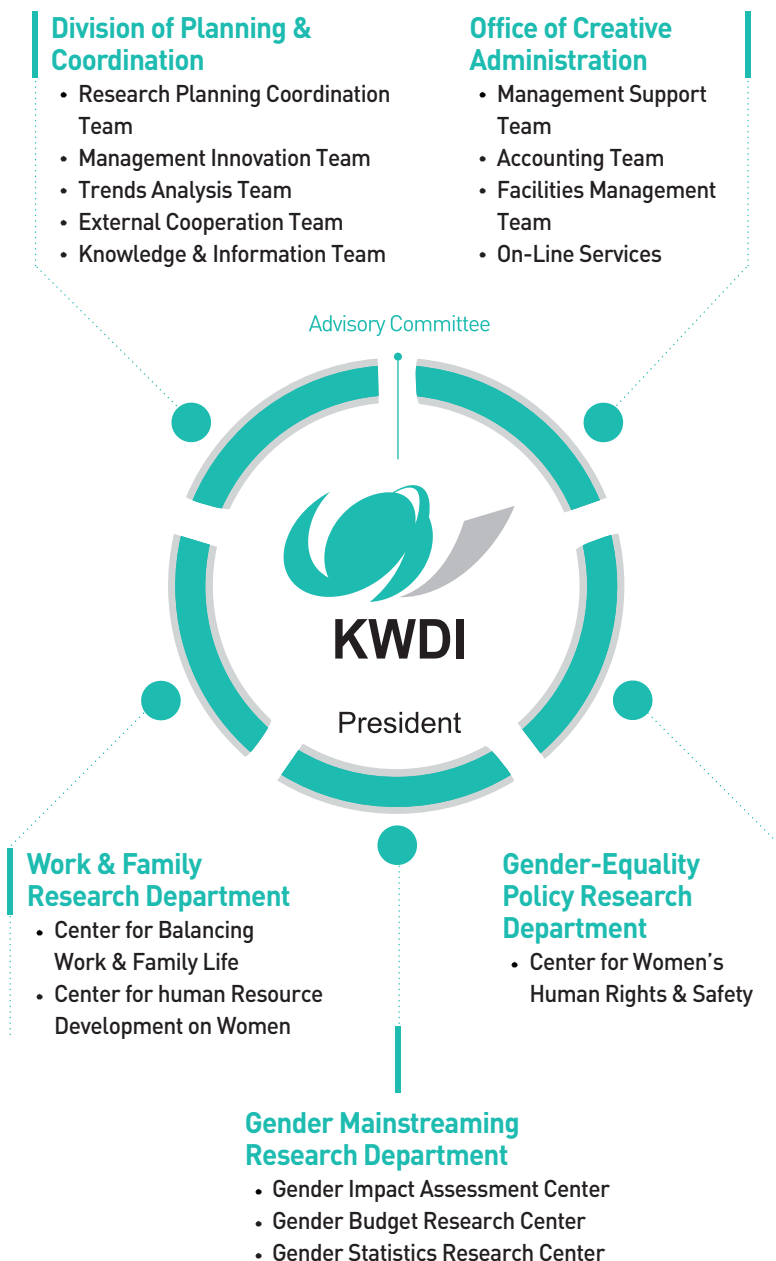
An abstract graphic on the right side of the page, consisting of several overlapping, flowing, wavy lines in various shades of teal and light green, creating a sense of movement and depth.

About KWDI

116 Organization

117 History

Organization



History

KWDI is the Vision Setter for Gender Policy Development and Total Solution Provider for Emerging Gender and family Issues.

2000s

- Aug. 13 2008** Inauguration of the 12th President, KIM Taehyun
- May 11 2007** Korean name of the Institute changed from “women’s development” institute to “gender policy research” institute
- Jul 1 2005** The Institute placed under the supervision of the National Research Council for Economics, Humanities and Social Sciences

1990s

- Jan. 29 1999** The Institute placed under the supervision of the National Research Council for Humanities and Social Sciences
- Feb. 28 1998** The Institute placed under the supervision of the Presidential Commission on Women’s Affairs
- Sep. 28 1995** Opening of Common Forum for Women (annex building)
- Apr. 18 1991** The Institute placed under the supervision of the Ministry of Political Affairs (II)

1980s

- Nov. 20 1987** Opening of the Institute Complex
- Apr. 21 1983** Establishment of the Institute under the supervision of the Ministry of Health and Social Affairs
- Mar. 29 1983** Inauguration of the 1st President, KIM Young-Chung
- Mar. 14 1983** Announcement of the Enforcement Ordinance of the KWDI Act (Presidential Decree No. 11071)
- Dec. 31 1982** Enactment of the Korean Women’s Development Institute (KWDI) Act (Act No. 3632)

Korean Women's Development Institute conducts research with careful consideration of worldwide trends in gender and family policy research.

2008 Research Goals and Main Research Projects

» To stimulate demand for female labor resource and support women's economic activities

- Policy tasks for the creation of jobs for women in social service sector II: Focusing on the stimulation of female labor resource supply
- Future direction and impacts of EITC on women's economic participation

» To strengthen protection for women's rights and welfare rights

- A Study on the consolidation of related laws for protection of women's rights and elimination of discrimination II
- An international comparative study on work-family balance and policy tasks for Korea

» To reduce the disparity between gender equality institutions and public awareness

- A study on the methods of gender mainstreaming and effective applications by related institutions I: Current situation of and support suggestions for gender mainstreaming and institutional application
- A study on the institutionalization of gender sensitive budget II: Focusing on drafting of a gender sensitive budget statement and the systematization of the process

2009 Research Goals and Main Research Projects

» To create jobs for women and increase capacity building

- Policy tasks and socio-economical effect analysis of women labor resource policy
- Policy tasks for the creation of jobs for women in social service sector III
- A survey on gendered employment mobility and policy tasks for further improvement in the labor market

» To increase protection for women's rights and the level of gender equality

- A Study on the consolidation of related laws for protection of women's rights and elimination of discrimination III
- Suggestions for the creation of community environment for safety of girls and women
- A survey on gender equality practices and a study on obstacles: Focusing on the private sphere

» To effectively establish gender mainstreaming institutions and enhance global status

- A study on effective establishment of gender mainstreaming institutions II
- A study on the institutionalization of gender sensitive budget III
- Suggestions for the management of Gender Equality Index for improving national competitiveness

» To establish a support system of work-family balance

- An international comparative study on work-family balance policies
- A policy paradigm for transition to a multi-national and multi-cultural society III

Research

Forum & Colloquium

KWDI stands at the core of gender and family policy networks on a variety of issues.

① Women's Policy Forum

- aims to bring together experts, women leaders, advocates, and women interested in developing effective policies for women and to provide an open space for discussions on new tasks for women's policies

② Gender Mainstreaming Forum

- aims to form a community of researchers and experts to share knowledge and information on gender mainstreaming and expand the research scope

③ Gender Budget Forum

- brings together experts and related research institutions from various disciplines like economics, finance, and women's studies for interdisciplinary researches on gender sensitive budget to contribute to not only gender equality but also transparency and efficiency of the national fiscal management

④ Family Policy Forum

- reviews various researches and methodologies on family and exchange opinions in an aim to build a network of family researchers within and outside the KWDI

⑤ Equality Policy Research Colloquium

- invites distinguished experts to explore new research perspectives and methods by analyzing policy environment related to women's policies

⑥ Women HRD Issue Focus

- explores issues and policy directions related to women HRD in an aim to identify new tasks for the KWDI and increase performance capacity

⑦ Global Women's Policy Colloquium

- Provides opportunities for Korea and international policy makers and researchers to discuss and compare women's issues and policies all over the world.

⑧ Work-Family Balance Forum

- invites experts and related researchers to explore issues and share experiences on women's work and children, family policy for the families with young children, the effects of time-spatial flexibility on employees' work-life balance, employees' perception of work-life balance etc.

⑨ Multicultural Society Forum

- aims to bring together scholars, activists, and policy experts to examine multicultural capacity and promote multicultural programs

Publications



「Research on Women」

Academic journal that specializes in research on women; candidate for registration at Korea Research Foundation (issued twice a year since 2007)



「Gender Review」

Informative journal on women-related policies and research trends (issued four times a year)

Instruction for Contribution to Gender Studies and Policy Review(GSPR)

The Gender Studies and Policy Review is an international journal that publishes scholarly articles in English with objectives of introducing women's problems, issues and policies of Korea to the international communities and exploring measures for solution together.

This journal will provide opportunities for presenting and sharing outcomes of women's policies' practices and researches in Korea and also establishing a research network with international organizations and scholars.

1. Thesis Contribution

Content

The content of thesis is limited to topics on women's policies and problems with proper form and structure for academic journals. Also, this content should not be either published in other journals or related periodicals.

2. Contribution Guidelines

- The manuscript should be around 15 pages of A4 size paper (English), and should not exceed 25 pages.
- Detailed editing standard and method are introduced in the Academic Journal Publication Guideline of the Gender Studies and Policy Review(GSPR).
- When submitting the manuscript, the application form should be filled out.

3. Qualification to Contribute

- Researcher on topics of women problems or women related policies

4. Publication Date and Application Deadline

- Publication date : 31th July, 2010 / Application deadline: 28th February, 2010

5. Submission

- Address : 276, Jin-Heung-ro, (Bulkwang-dong 1-363), Eunpyong-gu, Seoul, Korea 122-707
Korea Women's Development Institute, Publication Department
- Contact : 82. 2. 3156.7220 (Kyungsik Lee)
- E-mail Submission :
journal@kwidimail.re.kr

□ **Thesis Contribution**

The Gender Studies and Policy Review(GSPR) welcomes all the essays in English (article, perspective & review) related to women's policies and related research outcomes.

The submitted essay should not be published before and not be considered for publication elsewhere in its final form by either other journals or publishing companies. The participation of all interested candidates would be strongly appreciated.

□ **Manuscript Length**

All manuscript should be submitted in MS-word form, using 11 point type in double-spaced format. Manuscript length should be between 15-25 pages for Articles. For Perspectives & Reviews, it should not exceed 15 pages.

□ **Abstract**

The abstract of the essay must be less than 150 words in a separate page.

□ **Key words**

Provide more than 5 key words to represent the content of paper.

□ **Notes**

Notes should be numbered consecutively and should appear at the end of the text.

□ **Citation**

All the authors and publishing date should be indicated and the page number should be written in parenthesis.

e.g) Technology...will help the order of existence out (Rothschild, 1983: 84-5).

□ **References**

All the authors of the cited reference should appear in the list. If not cited, it should not appear in the list. The abbreviations of the periodicals cannot be used and all necessary information should be indicated.

- Books: Sargent, Lydia (1981). *The Unhappy Marriage of Marxism and Feminism*, London: Plute Press.
- Thesis in books: Browne, A. (1988). "A Women's Co-operative in the Gambia: Sukuta Communal garden Project," *All Are Not Equal: African Women in Co-operatives*, ed. L. Mayoux, London:

Institute for African Alternatives.

- Thesis in journal: Perry, Ruth and Lisa Greber (1990). "Women and Computers: An Introduction," *Signs*, 16(1): 74-101.

□ **A Joint Research**

In case of a joint research, the name of the primary writer comes at the foremost position. If there are more than one subsidiary author, the name of subsidiary authors should be followed after 'with'.

- Lee Key Woo, CHO Kisuk, and LEE Wun Ju

□ **Examination Process**

After the submission, the Editing Committee will appoint suitable thesis examiners through prior selection process. Examiners will report examining result to the Chief Editing Commissioner, and the Chief Editing Commissioner will inform contributor of final decision based on review and comment from the review committee. The thesis contributors and the examiners should be under anonymity during the examination period.

□ **Submission of Revised Manuscripts**

As for submitted manuscript, the revision can be either accepted or requested. The Editing Committee will decide on whether it is applicable for publication based on the examination results by examiners.

If requested to "submit after revision", the contributor should be in support of this request and under review process. However, the final decision for publication will be made through the Editing Committee meetings based on the final comment from the review committee.

□ **Copyright**

The copyright of the journal (both paper and electronic versions) remains with the Korea Women's Development Institute. The author of published journal will receive three volumes of published journal.

□ **Contact Details**

- Tel: 82. 2. 3156. 7220
- Fax : 82. 2. 3156. 7007
- E-mail: journal@kwidmail.re.kr

Manuscript Application Form

Main Author Name (English Name)			Social Security Number	
Affiliated Institution	Name			
	Department/Position			
	Major			
Contact Details	Address(Postal Code)	(-)		
	Telephone			
	Cel.			
	E-mail			
Co-authors	Name(English Name)	Affiliated Institution(English)		
	()	()		
	()	()		
	()	()		
Title			Language	
Subject				
Other Particularities				
(Summary of Article)				

※Preamble(Korean-English), key words (Korean-English), the source of articles, and resume of co-authors should be submitted with manuscript.

Application Form for the Article Review

To the Member of the Review Committee,

Thank you for accepting the article for review to publish in the **Korean Women's Development Institute's academic journal** 「Women Research」. We request a fair examination of the article listed below, and please do return the "Review Report Form" by the due date. Thank you again.

※ The compensation will be wired to the bank account when the review process is over.

Contact details : journal@kwidimail.re.kr

**The Chief Editing Commissioner,
Korea Women's Development Institute**