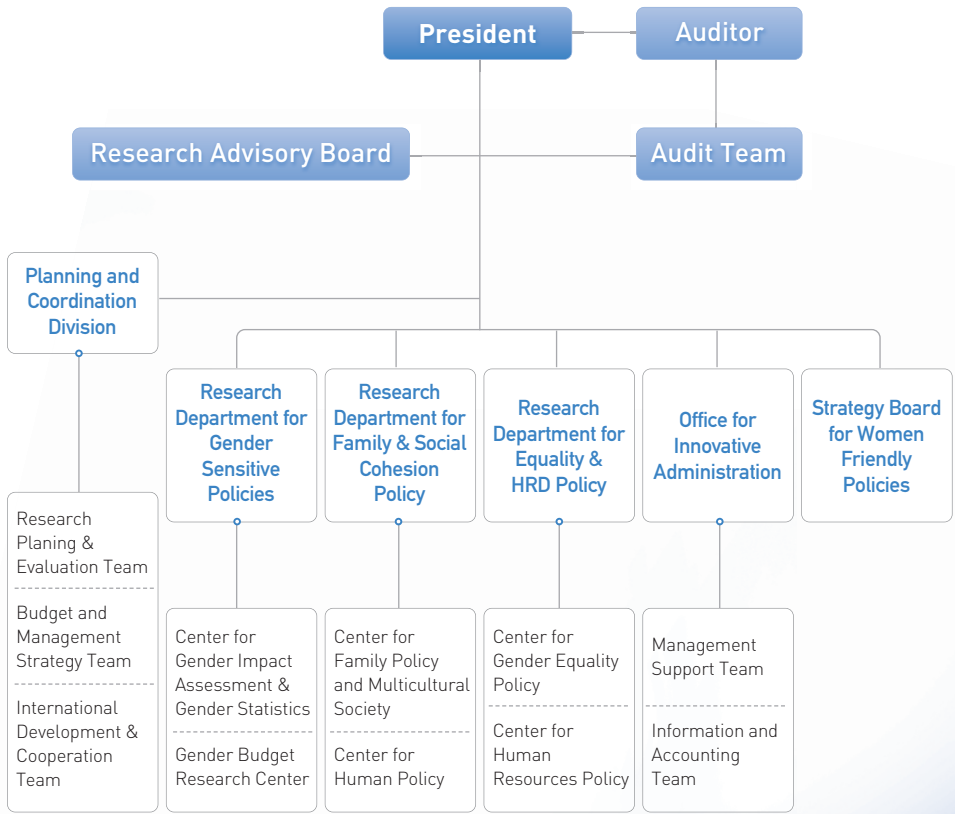


# Organization



## History

### Mission

**The Leading Policy Research Institute for the  
Fulfillment of Gender-Equal Society**

### 2000s

- Aug 13 2011** Inauguration of the 13th President, Choe Keum-sook
- May 11 2007** Korean name of the Institute changed from 'Women's Development Institute' to 'Gender Policy Research Institute'
- Jul 1 2005** The Institute was placed under the supervision of the National Research Council for Economics, Humanities and Social Sciences

### 1990s

- Jan 29 1999** The Institute was placed under the supervision of the National Research Council for Humanities and Social Sciences
- Feb 28 1998** The Institute was placed under the supervision of the Presidential Commission on Women's Affairs
- Sep 28 1995** Opening of the Common Forum for Women (Annex Building)
- Apr 18 1991** The Institute was placed under the supervision of the Ministry of Political Affairs (II)

### 1980s

- Nov 20 1987** Opening of the Institute Complex
- Apr 21 1983** Establishment of the Institute under the supervision of the Ministry of Health and Social Affairs
- Mar 29 1983** Inauguration of the 1<sup>st</sup> President, Kim Young-chung
- Mar 14 1983** Announcement of the Enforcement Ordinance of the KWDI Act
- Dec 31 1982** Enactment of the Korean Women's Development Institute (KWDI) Act (Act No.3632)

# Vision/Executive Goal

## Vision

**World's Leading Women's Policy Research Institute**

## Executive Goals

**Improving the practicality of Women's Policy Research**

1. Promote gender equality and women's human rights through women's policies
2. Conduct research aimed at establishing social institutions pertaining to gender equality
3. Conduct research on women and family policies

**Strengthening and diversifying research networks**

1. Identify creative research areas and improve the research management system
2. Systemize both local and international collaborative academia-industry relationships
3. Deepen and diversify our contributions to policy clients

**Improving performance management through communications and harmonious relationship**

1. Establish a performance-oriented creative management system
2. Promote an organizational culture of communication and harmony
3. Put ethical and responsible management into practice by improving efficiency and transparency

# 2012 Key Research Goals

**To strengthen the connection between women, family, and adolescent policies and develop future strategies**

**To further empower the female labor force and expand employment opportunities in order to promote social integration**

**To promote the human rights of women and children, enhance their safety, and further disseminate a culture of gender equality**

**To expand the foundation for gender-sensitive policy and the areas in which such policy is applied**

## Call for Papers

The Gender Studies and Policy Review is an international journal that publishes scholarly articles in English with the objective of introducing women's problems, issues and policies of Korea to the international communities to further explore the measures of solutions.

This journal provides opportunities for presenting and sharing of the outcomes of women's policy practices and researches in Korea and also wishes to establish a research network with international organizations and scholars.

### 1. Contents of the Article

- The content of the article is limited to topics on women's policies and issues that are in line with a proper form and a structure as an academic journal. Also, the article should not have been published or submitted for the reviews of nother journals.

### 2. Contribution Guidelines

- The manuscript should be around 15 pages in A4 size paper (English), and should not exceed 25 pages.
- Detailed editing standard and method are outlined in the Academic Journal Publication Guideline of Gender Studies and Policy Review (GSPR).
- When Submitting the manuscript, the application form should be filled out and included.

### 3. Qualification to contribute

- Researcher on topics of women or women related policies

#### 4. Publication date and Application deadline

- Publication Date: 31th July, 2013 / Application deadline: 28th February, 2013

#### 5. Submission

- Address: Korea Women's Development Institute, 225 Jinheung-ro, Eunpyeong-gu, Seoul, 122-707, Korea
- Contact: 02) 3156-7283
- - E-mail Submission: [journal@kwdimail.re.kr](mailto:journal@kwdimail.re.kr)



## Instructions for Contribution to Gender Studies and Policy Review(GSPR)

- **Thesis Contribution**

Gender Studies and Policy Review(GSPR) welcomes all the essays in English (article, perspective & review) related to women's policies and women related research outcomes. The submitted essay should not be published before and not be considered for publication elsewhere in its final form by either other journals or publishing companies. The participation of all interested candidates would be strongly appreciated.

- **Manuscript Length**

All manuscript should be submitted in MS-word form, using 11 point type in double-spaced format. Manuscript length should be between 15 -25 pages for Articles. For Perspective & Review, it should not exceed 15 pages.

- **Abstract**

The abstract of the essay must be less than 150 words in a separate page.

- **Key words**

Provide more than 5 key words to represent the content of paper.

- **Notes**

Notes should be numbered consecutively and should appear at the end of the text.

- **Citation**

All the authors and publishing date should be indicated and the page number should be written in parenthesis.

ex) Technology... will help the order of existence out (Rothschild, 1983: 84-5).

- **References**

All the authors of the cited reference should appear in the list. If not cited, it should not appear in the list. The abbreviations of the periodicals cannot be used and all necessary information should be indicated.

- Books : Sargent, Lydia (1981). *The Unhappy Marriage of Marxism and Feminism*, London: Plute Press.
- Thesis in books : Browne, A. (1988). "A Women's Co-operative in the Gambia: Sukuta Communal garden Project," *All Are Not Equal: African Women in Co-operatives*, ed. L. Mayoux, London: Institute for African Alternatives.
- Thesis in journal : Perry, Ruth and Lisa Greber (1990). "Women and Computers: An Introduction," *Signs*, 16(1): 74-101.

#### • A joint research

In case of a joint research, the name of the primary writer comes at the foremost position. If there are more than one subsidiary author, the name of subsidiary authors should be followed after 'with'.

- Lee Key Woo, CHO Kisuk, and LEE Wun Ju
- Geetanjali Singh CHANDA with Norman G. OWEN

#### • Examination Process

After the submission, the Editing Committee will appoint the suitable thesis examiners through prior selection process. Examiners will report the examining result to the editor in Chief and the editor in Chief will inform contributor of final decision based on the review and comment from review committee. The thesis contributors and the examiners should be under anonymity during the examination period.

#### • Submission of Revised Manuscripts

The Editing Committee will decide on whether it is applicable for publication based on the examination results by examiners.

If requested to "submit after revision", the contributor should be in support of this request and under review process. However, the final decision for publication will be made through Editing Committee meetings based on the final comment from review committee.

#### • Copyright

The copyright of journal (both paper and electronic version) remains with Korea Women's Development Institute. The author of published journal will receive three volumes of published journal.

#### • Contact Details

Tel : 02-3156-7283 / Fax : 02-3156-7007

E-mail : [journal@kwidmail.re.kr](mailto:journal@kwidmail.re.kr)



